

PRODUCT SPECIFICATIONS

Length: 72 $\frac{1}{2}$ " (1842mm) (88 $\frac{3}{8}$ " [2245mm] with removable leg extension)

Width: 19 $\frac{1}{2}$ " (502mm) (21 $\frac{1}{8}$ " [552mm] with side rails)

Height: 28" to 43" (711mm to 1092mm)

Trendelenburg: Up to 25°

Reverse Trendelenburg: Up to 25°

Lateral Tilt: Up to 18°

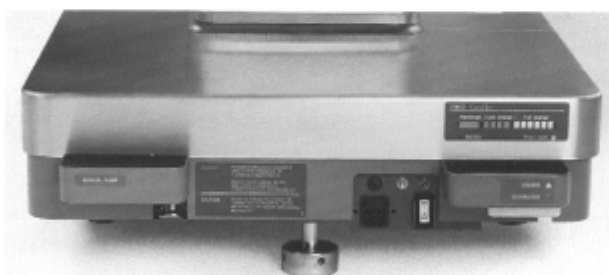
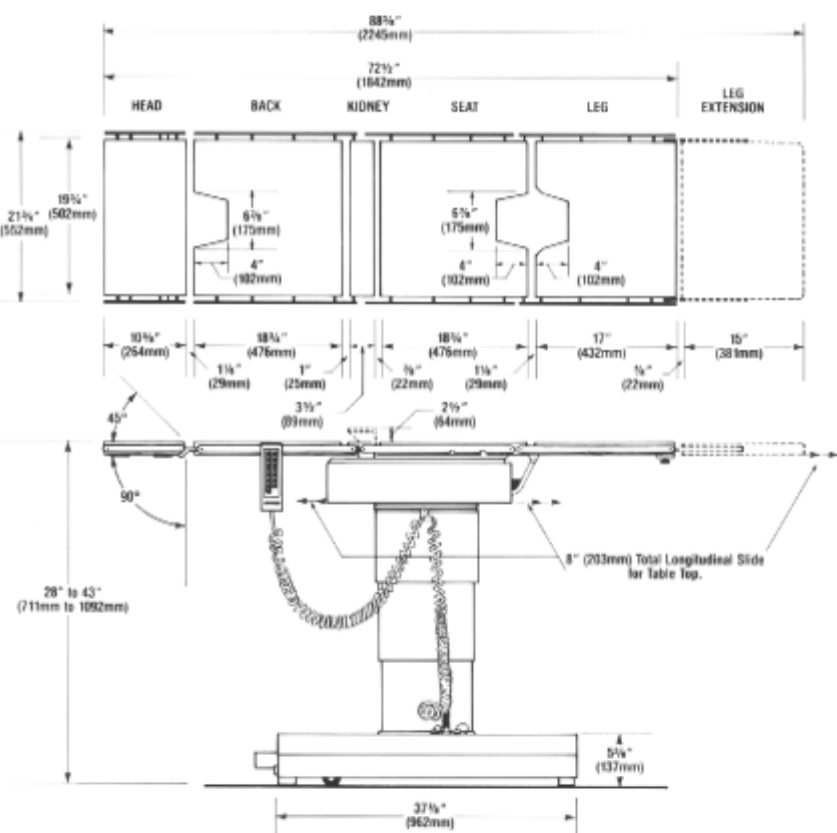
Back Section: Adjustable 30° below horizontal to 90° above horizontal.

Kidney Elevator: Extendable up to 2 $\frac{1}{2}$ " (64mm)

Leg Section: Adjustable from 95° below horizontal to 70° above.

Headrest Section: Adjustable from 90° below horizontal to 45° above in 15° increments.

Electrical Power Requirements: 115 VAC, 50/60 Hz, 4A, Single-Phase or 230 VAC, 50/60 Hz, 2A, Single-Phase



The Castle Champagne 4900B Model is battery powered. The battery recharge system will bring completely discharged batteries to 80% of full charge within six hours and to full charge within twelve hours of continuous charging. A battery status illuminated panel indicates the charge level.